

## Handling System for Hood type Pre-wash Infill Top with Bowl Left to Right, 1000mm

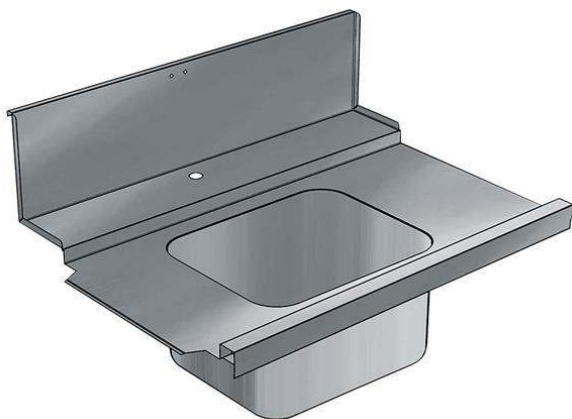
ITEM # \_\_\_\_\_

MODEL # \_\_\_\_\_

NAME # \_\_\_\_\_

SIS # \_\_\_\_\_

AIA # \_\_\_\_\_

**865318 (BHHP10L)**Prewash infill top with bowl,  
left>right, 1000 mm

### Short Form Specification

**Item No.** \_\_\_\_\_

For hood type dishwashers. Constructed in 304 AISI stainless steel with backsplash mm250h. Bowl size mm500x400x250h with overflow pipe and drain hole. Basket direction: from left to right.

### Main Features

- Designed for 500x500 mm dishwashing racks.
- To be secured to the dishwasher and fitted to the receiving and sorting tables at the other end.

### Construction

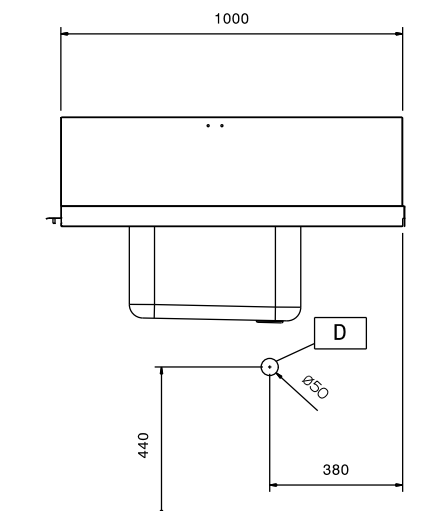
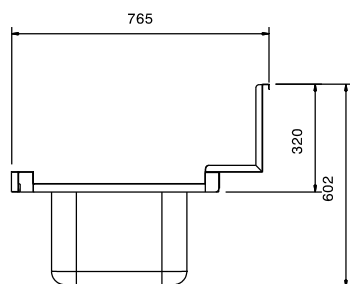
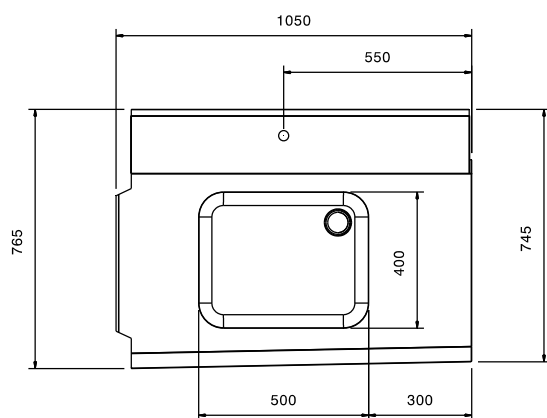
- Deep anti-drip profiles completely folded with lower edge for safe and easy cleaning.
- All surfaces smooth with polished finish.
- 304 AISI stainless steel construction throughout.
- Included splashback to prevent water spatter.

### Optional Accessories

- DOUBLE HOLE DECK MOUNTED ELBOW OPERATED MIXING TEMP. FAUCET WITH PRE-RINSE UNIT PNC 855379 ☐
- DECK MOUNTED MIXING TEMPERATURE PRE-RINSE UNIT PNC 855380 ☐
- Wall mounted mixing temperature pre-rinse unit PNC 855381 ☐
- Single hole deck mounted mixing temperature pre-rinse unit PNC 855385 ☐
- Single hole deck mounted elbow operated mixing temperature faucet with pre-rinse unit PNC 855386 ☐
- Single hole deck mounted riser add-on mixing temperature faucet with pre-rinse unit PNC 855389 ☐
- Floor fastening kit for 2 square legs PNC 865386 ☐
- Single plastic drain syphon 2" for sinks PNC 895313 ☐

APPROVAL: \_\_\_\_\_

# Handling System for Hood type Pre-wash Infill Top with Bowl Left to Right, 1000mm

**Front**

**Side**

**Top**

**Key Information:**

External dimensions, Width:

865318 (BHHP1B10L) 1050 mm

External dimensions, Depth: 765 mm

External dimensions, Height: 600 mm

Net weight: 8 kg

Basin dimensions: 500x400x300h

Feeding direction: from Left to Right